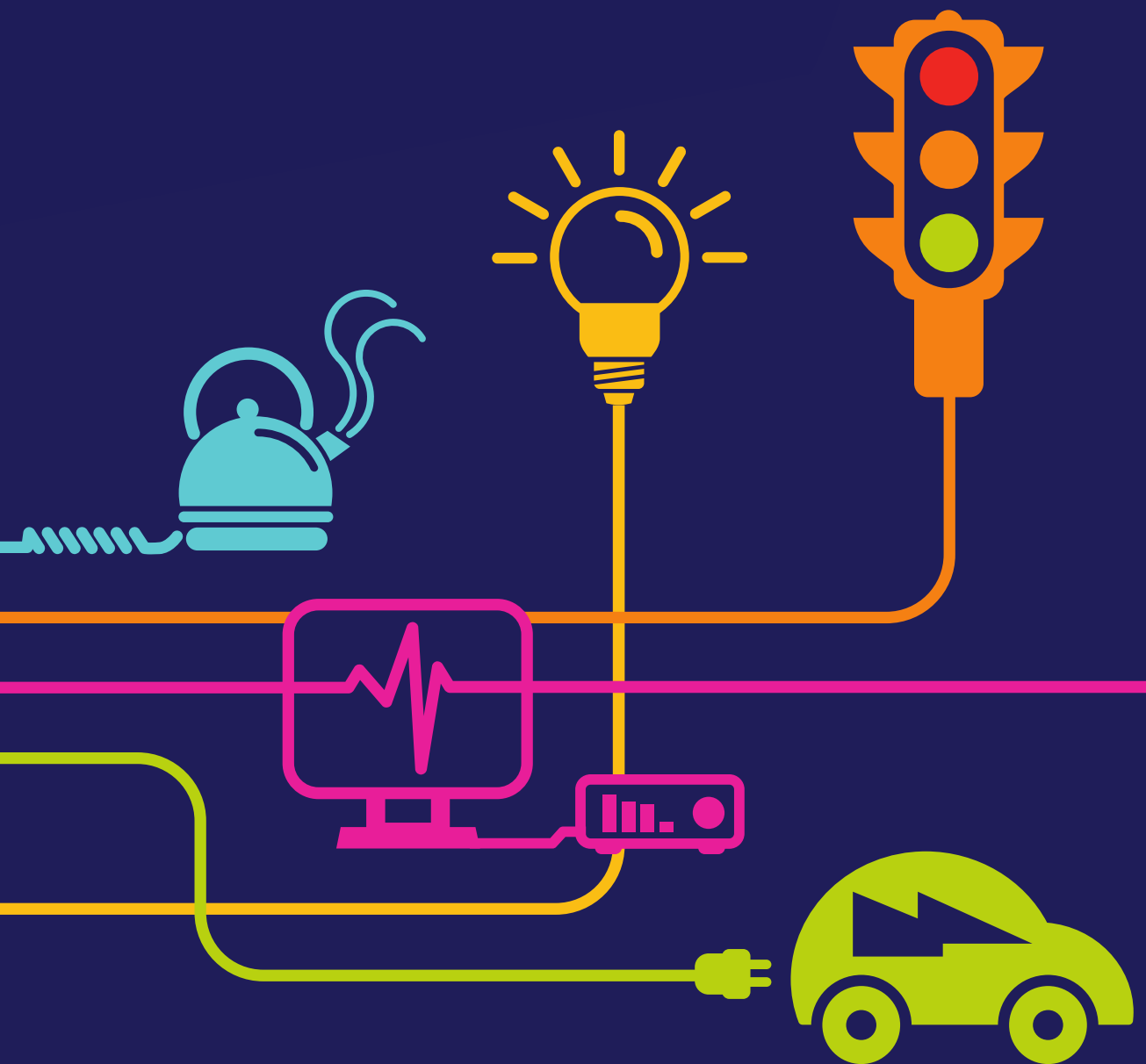


DOCUMENT 5.7.1.15

Landscape Mitigation Proposals Tŷ Fodol THH & CSEC Chapter 7 – Figure 15

National Grid (North Wales Connection Project)

*Regulation 5(2)(a) including (l) and (m) of the Infrastructure Planning
(Applications: Prescribed Forms and Procedure) Regulations 2009*





Planting Schedule for Ty Fodol Tunnel Head House and Cable Sealing End Compound

WOODLAND TREE SPECIES

No.	Species	Abbreviation	Size (cm)	Root Type	Specification
26	Alnus glutinosa	Aln glu	12-14	RB	HS, 300-350cm, bushy
16	Betula pendula	Bet pen	200-250	RB	Feathered, bushy
25	Betula pubescens	Bet pub	12-14	RB	HS, 300-350cm, bushy
18	Carpinus betulus	Car bet	14-16	RB	EHS, 425-450cm,bushy
10	Fagus sylvatica	Fag syl	14-16	RB	EHS, 425-450cm,bushy
22	Quercus robur	Que rob	12-14	RB	HS, 300-350cm, bushy
5	Quercus petraea	Que pet	14-16	RB	EHS, 425-450cm,bushy
11	Pinus sylvestris	Pin syl	14-16	RB	EHS, 425-450cm,bushy
31	Sorbus acuparia	Sor acu	12-14	RB	HS, 300-350cm, bushy
15	Ulmus glabra	Ulm gla	12-14	RB	HS, 300-350cm, bushy

WOODLAND UNDERSTOREY

(12555 m² planted @ 1/m², individual varieties to be planted in groups of approximately 3-7)

No.	Species	% of Mix	Size (cm)	Root Type
2511	Crataegus monogyna	20	60/80	B
2511	Corylus avellana	20	60/80	B
1256	Rosa canina	10	40/60	B
1256	Rosa pimpinellifolia	10	40/60	B
1883	Prunus spinosa	15	60/90	B
628	Salix cinerea	5	60/80	B
1883	Sambucus nigra	15	60/80	B
628	Ulex europaeus	5	40/60	2L Pot

LOW HEIGHT PLANTING MIX FOR UNDER OVERHEAD LINE

(3860 m² planted @ 1/m², individual varieties to be planted in groups of approximately 5-9)

No.	Species	% of Mix	Size (cm)	Root Type
386	Crataegus monogyna	10	60/80	B
386	Corylus avellana	10	60/80	B
386	Cornus sanguinea	10	40/60	B
579	Dryopteris dilatata	15	40/60	2L Pot
193	Hedera helix	5	10/20	2L Pot
193	Ligustrum vulgare	5	40/60	2L Pot
193	Lonicera periclymenum	5	40/60	2L Pot
386	Rosa pimpinellifolia	10	40/60	2L Pot
386	Rosa canina	10	40/60	B
193	Salix cineria	5	40/60	B
193	Ulex europaeus	5	40/60	2L Pot
386	Viburnum opulus	10	40/60	B

HEDGEROW MIX

(525 m @ 6/m in a double staggered row, individual varieties to be planted in groups of approximately 3-7)

No.	Species	% of Mix	Size (cm)	Root Type
630	Crataegus monogyna	20	40/60	B
473	Corylus avellana	15	40/60	B
158	Ilex aquifolium	5	40/60	2L Pot
630	Prunus spinosa	20	40/60	B
473	Rosa canina	15	40/60	B
315	Salix cinerea	10	40/60	B
473	Sambucus nigra	15	40/60	B

AQUATIC PLANTING

(610 m² planted @ 4/m², individual varieties to be planted in groups of approximately 3-7)

No.	Species	% of Mix	Size (cm)	Root Type
488	Caltha palustris	20	20/30	1L
488	Iris pseudacorus	20	40/50	2L
488	Iris sibirica	20	40/50	2L
244	Juncus effusus	10	40/50	2L
488	Myosotis scopriodes	20	20/30	1L
244	Typha angustifolia	10	20/30	2L

GRASS SEED MIXES

27690 m² Low Maintenance Grass Mix @ 4g/m² - Emorsgate EM10 Tussock Mixture or equivalent approved

2240 m² Meadow Grass Mix @ 4g/m² - Emorsgate EM1 Meadow Mix or equivalent approved

NWC ROUTE LEGEND

LEGEND

- VEGETATION RETAINED
- EXISTING INDIVIDUAL TREES
- HARD SURFACING (REFER TO ENGINEERS DRAWINGS FOR DETAILS)
- POTENTIAL SALINE TREATMENT AREA
- ATTENUATION POND
- PROPOSED CLODDIAU (STONE FACED BANK WITH HEDGEROW)
- PROPOSED CRAWIAU (SLATE PILLAR FENCING)
- PROPOSED WOODLAND UNDERSTOREY MIX
- PROPOSED EXTRA HEAVY STANDARD TREES
- PROPOSED STANDARD/ FEATHERED TREES
- PROPOSED LOW HEIGHT PLANTING MIX
- AREAS OF REINSTATED PASTURE
- PROPOSED LOW MAINTENANCE GRASS MIX
- PROPOSED MEADOW PLANTING
- PROPOSED AQUATIC PLANTING

NOTES

SEE THE DESIGN PLANS (**DOCUMENT 4.13**) FOR TUNNEL HEAD HOUSE AND CABLE SEALING END COMPOUND LAYOUT AND SURFACING DETAILS

B	14/08/18	ENVIRONMENTAL STATEMENT	KM	HJ	SG
Rev	Date	Description	GIS	Chk	App

nationalgrid

Scheme: NORTH WALES CONNECTION PROJECT

Document Number: 5.7.1.15

Document Title: **FIGURE 7.15**
LANDSCAPE MITIGATION PROPOSALS
TY FODOL THH & CSEC

Creator: KM	Date: 18/07/2018	Checker: HJ	Date: 18/07/2018	Approver: SG	Date: 19/07/2018
Document Type: FIGURE	Scale: 1:1000	Format: A1	Sheets: 1 of 1	Rev: B	